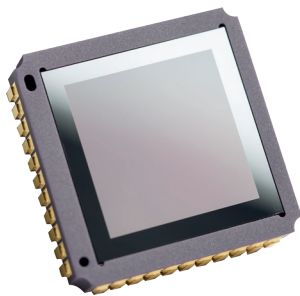


Thermal Image
Sensors

atto320™
320 x 240 - 12 μm



THE **BEST OF LYNRED** IN **12 μm** PIXEL PITCH

Based on continuous feedback from our customers and proactively collecting their needs, Atto320 is the first 12 μm technology thermal imager developed by Lynred.

Offering high quality moving images and low power consumption, Atto320

combines key values to meet the requirements of Leisure, Surveillance, Thermography and Firefighting applications.

With Atto320, you benefit from the best of Lynred's expertise in 12 μm pixel pitch.



LEISURE



SURVEILLANCE



THERMOGRAPHY



FIREFIGHTING

+ HIGH-QUALITY MOVING IMAGES

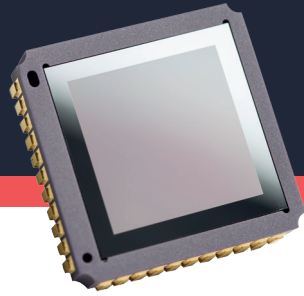
+ SEAMLESS INTEGRATION

+ OPTIMIZED TOTAL COST OF OWNERSHIP



LYNRED
BY SOFRADIR & ULIS

atto³²⁰TM
320 x 240 - 12 μ m



THE **BEST OF LYNRED**
IN **12 μ m** PIXEL PITCH

PRODUCT NUMBER: **ATTO320-60HZ**

"Capture even the tiniest details"

HIGH-QUALITY MOVING IMAGES

- Sharp contrast
 - Thermal sensitivity < 60 mK, (f/1, 300K, 60Hz)
 - [-40°C; +85°C] operating temperature range
- Fluid and smooth image
 - Frame rate: Up to 60Hz
 - Thermal time constant < 10 ms
- High uniformity
 - Array operability > 99.5 %

"Ready for high volume production"

SEAMLESS INTEGRATION

- Simplified electronic design
 - Full digital component
- High volume compliant
 - Surface Mount Device (J-Lead44)
 - JEDEC's reflow and handling standards compatible
- Flexible configuration
 - Full access to sensor features (I²C)
 - Free run or external trigger mode

"Designed for cost optimized systems"

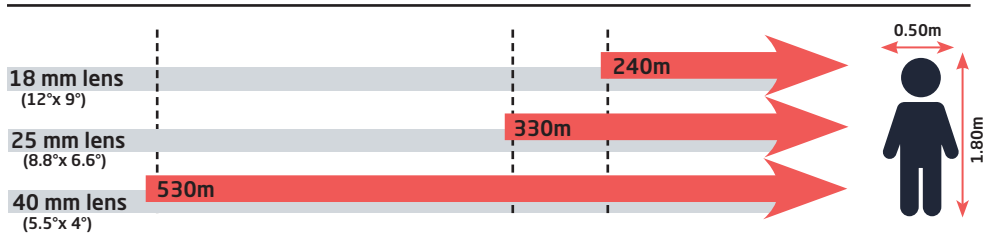
OPTIMIZED TOTAL COST OF OWNERSHIP

- Reduced optic size and cost
 - 12 μ m pixel pitch
- Product platform
 - Compatible with PIC0384-053 (17 μ m)
- Simplified image processing
 - Predictable behavior
 - TECless, Shutterless compatible
- Battery optimization
 - Low power consumption < 220 mW
 - Digital mode

PIC0384-053 (17 μ m) COMPATIBLE ✓



Recognition distances for human measuring 1.80 m x 0.50 m



Specifications are subject to change

LYNRED HEADQUARTERS
Avenue de la Vauve - CS 20018
91127 Palaiseau - France
Phone +33 (0)1 60 92 18 30
info@lynred.com

DEVELOPMENT AND PRODUCTION CENTER
Actipole-CS 10021
364, route de Valence
38113 Veurey-Voroize - France
Phone +33 (0)4 76 28 77 00
info@lynred.com



www.lynred.com