

Thermal Image Sensors

DATA CENTER - HOUSTON, TX, USA

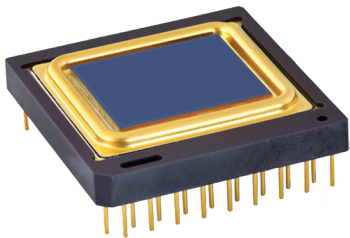
+40.689060

```
Satellite Data Setup
Latitude: 40.8100°
Longitude: -73.9620°
Name: 91W SPYEYE 17 (G-17)
| NIMI0 1 | NIMI0 2
Distance: 37809km
Elevation: 39.7°
Azimuth (true): 205.1°
Azimuth (magn.): 218.2°
LNB Skew [°]: 18.7°
```



Pico640Gen2™

640 x 480 - 17 μm



DESIGNED TO MEET THE TOUGHEST THERMAL IMAGE EQUIPMENT SPECIFICATIONS

The thermal image sensor, Pico640Gen2, will exceed your most demanding requirements.

Pico640Gen2 gives manufacturers a unique addition to their developments toolkits.

It is built on proven technology, is easy to integrate and limits development costs and speeds time to market - for truly competitive end products.



SURVEILLANCE & UAV



LEISURE



THERMOGRAPHY



DEFENSE

+ ENHANCED IMAGE QUALITY

+ PROVEN RELIABILITY

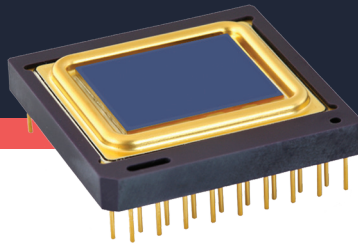
+ SEAMLESS INTEGRATION



LYNRED
BY SOFRADIR & ULIS

Pico640Gen2™

640 x 480 - 17 μm



**DESIGNED TO MEET THE
TOUGHEST THERMAL IMAGE
EQUIPMENT SPECIFICATIONS**

PRODUCT NUMBER: **PIC0640-046 / PIC0640-046+**

ENHANCED IMAGE QUALITY

**“Detects fast
moving objects”**

- Sharp contrast
 - Thermal sensitivity < 50 mK (F/1, 300K, 30Hz)
 - Thermal sensitivity < 40 mK (F/1, 300K, 30Hz) (Pico640+)
 - Extended operating temperature [-40°C; +85°C]
- Fluid and smooth image
 - Frame rate up to 120Hz
 - Thermal time constant < 12 ms
- High uniformity
 - Array operability > 99.5 %
 - Array operability ≥ 99.8 % (Pico640+)

PROVEN RELIABILITY

**“Robust
for extreme
environments”**

- Standards MIL810 - MIL883
- Thermal Weapon Sight (TWS) qualified
- Product availability and exportability
 - Products designed and manufactured in Europe
- Product delivery to our customers
 - On-time order deliveries > 95%
- Guaranteed 10 years against vacuum loss

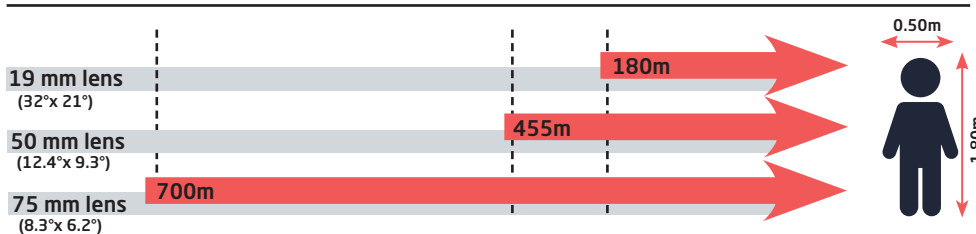
SEAMLESS INTEGRATION

**“Ready for
high volume
production”**

- Product platform
 - Fully compatible with Pico384P
 - Full access to sensor features (I²C)
 - External frame synchronization capability
- Simplified image processing
 - TEClass, Shutterless compatible
 - Single gain table and predictable offset management
- Battery optimization
 - Low power consumption < 130 mW



Recognition distances for human measuring 1.80 m x 0.50 m



LYNRED HEADQUARTERS

Avenue de la Vauve - CS 20018
91127 Palaiseau - France
Phone +33 (0)1 60 92 18 30
info@lynred.com

DEVELOPMENT AND PRODUCTION CENTER

Actipole-CS 10021
364, route de Valence
38113 Veurey-Voroize - France
Phone +33 (0)4 76 28 77 00
info@lynred.com

