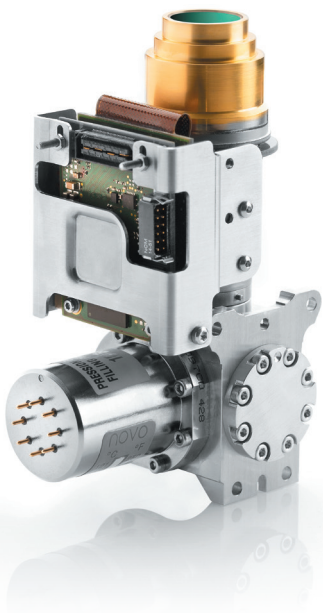


# DAPHNIS-HD MW

1280 x 720 - 10  $\mu\text{m}$  pitch - MCT



→ HD 10  $\mu\text{m}$  pitch:  
the best offer for compact 16:9  
format MWIR systems.



DAPHNIS-HD MW is the suitable product for all your applications requiring 16:9 HD format: airborne, naval, and ground vehicles.

This smallest pixel pitch innovation from Lynred guarantees:

- HIGH RESOLUTION
- LONGER RANGE
- LARGER FIELD OF VIEW
- COMPACTNESS
- IMPROVED RELIABILITY

DAPHNIS-HD MW takes full advantage of Lynred latest HgCdTe technologies. It provides simplified interfaces for an easy and quick integration in your systems.

The proxy board offers management and data processing of the detector as well as digital output.

## ARRAY FEATURES

Format	1280 x 720
Pixel pitch	10 $\mu\text{m}$ x 10 $\mu\text{m}$
Detector spectral response	3.7 $\mu\text{m}$ – 4.8 $\mu\text{m}$
FPA Operating temperature	Up to 120 K

## ROIC (READ-OUT INTEGRATED CIRCUIT)

ROIC architecture	Digital outputs; Direct Injection input circuit
ROIC functionalities	Programmable integration time, anti-blooming, invert/revert; binning, snapshot operation, selectable read mode (IWR or ITR), programmable windowing, high dynamic range
Windowing modes	320 x 4 minimum programmable
Charge handling capacity	3 main gains: 0.8 Me <sup>-</sup> , 2.6 Me <sup>-</sup> , 5.2 Me <sup>-</sup>

## INPUT / OUTPUT

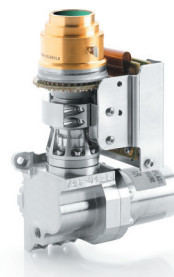
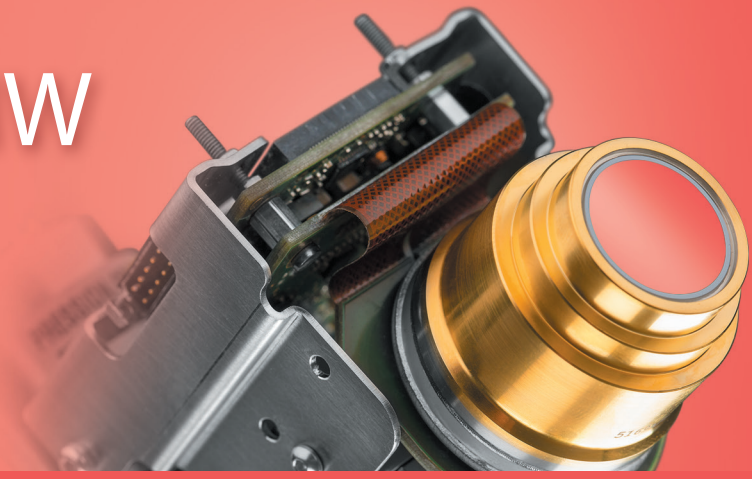
Board Power supply	6V <sub>DC</sub>
Video output	14 bits, CAMERALINK®
Frame rate	Up to 85 Hz full frame rate

DAPHNIS-HD MW

# DAPHNIS-HD MW

1280 x 720 - 10 µm pitch - MCT

→ HD 10 µm pitch:  
the best offer for compact 16:9  
format MWIR systems.



DAPHNIS-HD MW

## TYPICAL PERFORMANCES

NETD	20 mK (293K, 70% well fill, 2.6 Me-)			
Array operability	99.8%			
	RM2 / K563	RM4	RM3 / K508	K508 N
FOV / Driving electronics (*)	f/2 to f/4	f/2 to f/4	f/2 to f/4	f/2 to f/4
Cooler power supply	12 V	12 V	24 V	24 V
Cooler regulated input power @ 20°C (**)	4 W <sub>DC</sub>	4.5 W <sub>DC</sub>	4.7 W <sub>DC</sub>	4.7 W <sub>DC</sub>
Cooldown input power @ 20°C (**)	12 W <sub>DC</sub>	21 W <sub>DC</sub>	13 W <sub>DC</sub>	13 W <sub>DC</sub>
Cooldown time @ 20°C	6 min	4 min	4 min 30 s	4 min 30 s
Cooler dimensions (mm)	Ø 30.5 x L 82	Ø 43.5 x L 78	Ø 46 x L 71	Ø 46 x L 71
IDCA height (optical axis, mm)	H < 123.5	H < 127	H < 144	H < 144
Weight	0.47 kg	0.67 kg	0.64 kg	0.67 kg
Operating temperature	- 40° C to 71° C	- 40° C to 71° C	- 40° C to 71° C	- 40° C to 71° C

(\*) Contact Sofradir for available configurations

(\*\*) W<sub>DC</sub> = at cooler C&CE DC input

## OPTIONS

Technical training and support

## APPLICATIONS



Technical characteristics described in this data sheet are for information only.  
They are not contractual and may change without prior notice.

**LYNRED HEADQUARTER**  
Avenue de la Vauve - CS 20018  
91127 Palaiseau - France  
Phone + 33 1 60 92 18 30  
info@lynred.com

**DEVELOPMENT AND PRODUCTION CENTER**  
Z.I. - BP 21  
38113 Veurey-Voroize - France  
Phone + 33 4 76 28 77 00  
info@lynred.com



**LYNRED**  
BY SOFRADIR & ULIS  
www.lynred.com