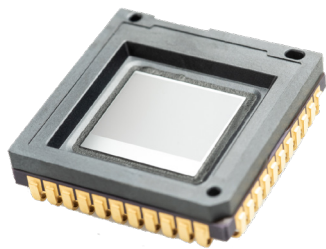




atto⁶⁴⁰TM

640 x 480 - 12 μm



THE SMALLEST **VGA 12 μm** THERMAL IMAGING SENSOR ON THE MARKET

The Lynred atto640 thermal imaging sensor is ideal for SWaP applications. Manufactured using wafer-level packaging technology and integrated into a 16.5 x 16.5 mm² SMT package, the atto640 is the smallest 60 Hz sensor on the market with a pixel pitch of 12 μm .

The atto640 was developed with more compact systems in mind as an alternative to the popular Pico640 17 μm VGA sensor.

It offers all of the features and performance required by leisure, defense, surveillance, and thermography applications.



LEISURE



DEFENSE



SURVEILLANCE



THERMOGRAPHY

+ BEST IN CLASS SWaP CHARACTERISTICS

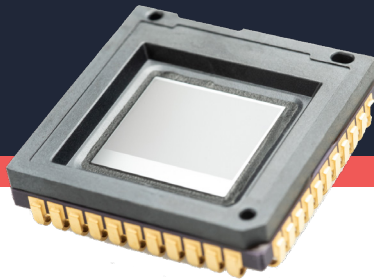
+ CRISP MOVING IMAGES

**+ SEAMLESS INTEGRATION INTO VOLUME
MANUFACTURING ENVIRONMENTS**

atto⁶⁴⁰TM

640 x 480 - 12 μ m

THE SMALLEST
VGA 12 μ m



PRODUCT PARTNUMBER: **ATT0640**

BEST IN CLASS SWAP CHARACTERISTICS

“Perfect for compact battery-operated systems”

- Compact, affordable optics
 - 12 μ m pixel pitch
- Smallest VGA sensor on the market
 - 16.5 x 16.5 mm² package
 - with Lynred wafer-level packaging technology
- Low-power for optimal battery usage
 - 130 mW @ 60Hz (analog output)

CRISP MOVING IMAGES

“Capture even the tiniest details”

- Sharp contrast
 - Thermal sensitivity < 60mK or (optional) < 50mK (at F/1, 300K, 30Hz)
- Flicker-free image
 - Frame rate up to 60Hz
 - Thermal time constant < 10ms
- High uniformity
 - Operability > 99.5%

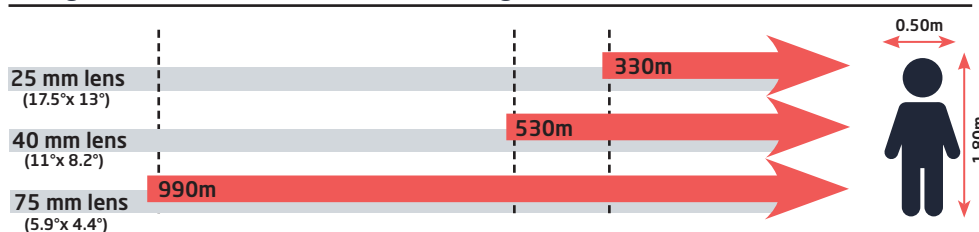
SEAMLESS INTEGRATION

“Ready for volume manufacturing”

- Compatible with volume manufacturing
 - Surface Mount Device (J-Lead44) compatible with standard off-the-shelf socket
 - Wafer Level Packaging & high-volume assembly processes
 - Delivery in JEDEC trays
- QVGA-compatible product platform
 - Footprint compatible with QVGA products: PICO384-053 (17 μ m) and ATTO320 (12 μ m)
- Flexible configuration
 - Full access to sensor features (I²C)
 - Free run or external trigger mode



Recognition distances for human measuring 1.80 m x 0.50 m



The technical specifications and other product information in this document are provided for information only and are subject to change without notice.



LYNRED HEADQUARTERS
Avenue de la Vauve - CS 20018
91127 Palaiseau - France
Phone +33 (0)1 60 92 18 30
info@lynred.com

DEVELOPMENT AND PRODUCTION CENTER
Actipole-CS 10021
364, route de Valence
38113 Veurey-Voroize - France
Phone +33 (0)4 76 28 77 00
info@lynred.com

