




PICO384 Gen2

384 x 288 – 17 μm

The thermal image sensor Pico384Gen2 is specially designed for mass thermal detection markets. Built on proven technology, it limits development costs and shortening time to market.

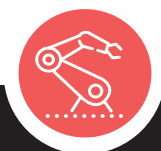
A FULL DIGITAL SURFACE MOUNT DEVICE FOR HIGH VOLUME INTEGRATION

-  INCREDIBLE IMAGE QUALITY
-  SEAMLESS INTEGRATION
-  OPTIMIZED TOTAL COST OF OWNERSHIP

LEISURE

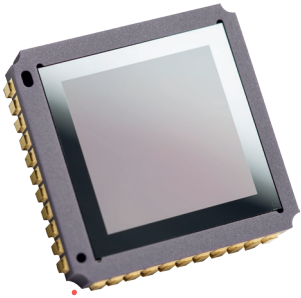
SURVEILLANCE

INDUSTRY



●● FULL DIGITAL SURFACE MOUNT DEVICE FOR HIGH VOLUME INTEGRATION ●●

PICO 384Gen2



INCREDIBLE IMAGE QUALITY

Sharp contrast	<ul style="list-style-type: none"> Thermal sensitivity < 60 mK, (f/1, 300K, 50Hz) [-40°C; +85°C] operating temperature range
Fluid and smooth image	<ul style="list-style-type: none"> Frame rate up to 60Hz Thermal time constant < 10 ms
High uniformity	<ul style="list-style-type: none"> Array operability > 99.8 %

SEAMLESS INTEGRATION

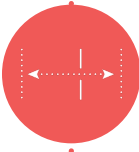
Simplified electronic design	<ul style="list-style-type: none"> Full access to sensor features (I²C serial link) Free run or external trigger mode Full digital component
High volume compliant	<ul style="list-style-type: none"> Surface Mount Device (J-Lead44) JEDEC's reflow and handling standards compatible

OPTIMIZED TOTAL COST OF OWNERSHIP

Simplified image processing	<ul style="list-style-type: none"> Predictable behavior TECless, Shutterless compatible
Battery optimization	<ul style="list-style-type: none"> Low power consumption < 220 mW - 60Hz Digital mode
Proven reliability	<ul style="list-style-type: none"> Standards MIL810 - MIL883



COMPACT



LONG RANGE OBSERVATION

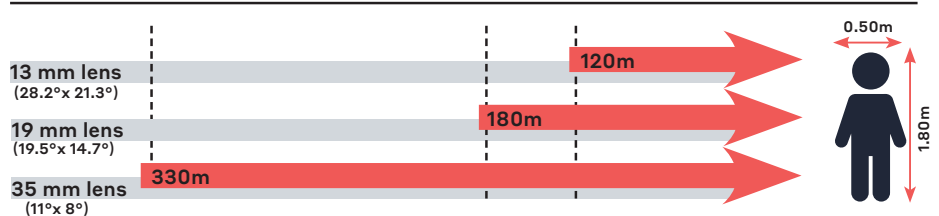


ROBUST



FULL DIGITAL

Recognition distances for human measuring 1.80 m x 0.50 m



Range for Johnson's criteria, target deltaT = 2K, perfect atmospheric and optics transmissions, theoretical square pixel.



LYNRED HEADQUARTERS
 Avenue de la Vauve - CS 20018
 91127 Palaiseau - France
 Phone +33 (0)1 60 92 18 30
 info@lynred.com

DEVELOPMENT AND PRODUCTION CENTER
 Actipole - CS 10021 - 364, route de Valence
 38113 Veurey-Voroize - France
 Phone +33 (0)4 76 28 77 00
 info@lynred.com