




PICO640 Gen2

640 x 480 – 17 μm

The thermal image sensor Pico640Gen2 is a versatile product.

Built on proven technology, it limits development costs and shortens time to market.

DESIGNED TO ANSWER ALL YOUR NEEDS

-  **ENHANCED IMAGE QUALITY**
-  **PROVEN RELIABILITY**
-  **SEAMLESS INTEGRATION**

DEFENSE

LEISURE

SURVEILLANCE

INDUSTRY



DESIGNED TO ANSWER ALL YOUR NEEDS

PICO 640Gen2

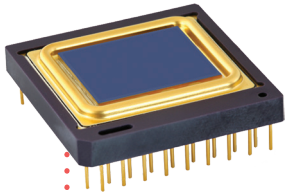


IMAGE QUALITY

RUGGEDIZED FOR HARSH ENVIRONMENT

RELIABLE

SEAMLESS INTEGRATION

LOW POWER CONSUMPTION

ENHANCED IMAGE QUALITY

Sharp contrast	<ul style="list-style-type: none"> ■ Thermal sensitivity < 50 mK (f/ 1, 300K, 30Hz) ■ Thermal sensitivity < 40 mK (f/ 1, 300K, 30Hz) (Pico640+) ■ Extended operating temperature [-40°C; +85°C]
Fluid and smooth image	<ul style="list-style-type: none"> ■ Frame rate up to 120Hz ■ Thermal time constant < 12 ms
High uniformity	<ul style="list-style-type: none"> ■ Array operability > 99.5 % ■ Array operability ≥ 99.8 % (Pico640+)

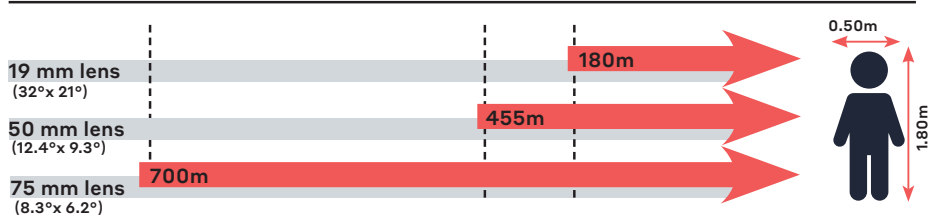
PROVEN RELIABILITY

	<ul style="list-style-type: none"> ■ Standards MIL810 – MIL883
	<ul style="list-style-type: none"> ■ Thermal Weapon Sight (TWS) qualified (Pico640+)
Product availability and exportability	<ul style="list-style-type: none"> ■ Products designed and manufactured in Europe
Product delivery to our customers	<ul style="list-style-type: none"> ■ On-time order deliveries > 95% ■ Guaranteed 10 years against vacuum loss

SEAMLESS INTEGRATION

Product platform	<ul style="list-style-type: none"> ■ Full access to sensor features (I²C) ■ External frame synchronization capability
Simplified image processing	<ul style="list-style-type: none"> ■ TECless, Shutterless compatible ■ Single gain table and predictable offset management
Battery optimization	<ul style="list-style-type: none"> ■ Low power consumption < 130 mW

Recognition distances for human measuring 1.80 m x 0.50 m



Range for Johnson's criteria, target deltaT = 2K, perfect atmospheric and optics transmissions, theoretical square pixel.



LYNRED HEADQUARTERS
 Avenue de la Vauve - CS 20018
 91127 Palaiseau - France
 Phone +33 (0)1 60 92 18 30
 info@lynred.com

DEVELOPMENT AND PRODUCTION CENTER
 Actipole - CS 10021 - 364, route de Valence
 38113 Veurey-Voroize - France
 Phone +33 (0)4 76 28 77 00
 info@lynred.com