

# PICO640S

640 x 480 – 17  $\mu$ m

The thermal image sensor Pico640S has increased sensitivity to provide high image quality when scene dynamic is light.

Built on proven technology, it limits development costs and shortens time to market.

## SPECIALLY DESIGNED **FOR HARSH ENVIRONMENT WITH LOW LIGHT CONTRAST**



**ENHANCED IMAGE QUALITY**



**SEAMLESS INTEGRATION**

DEFENSE



LEISURE



SURVEILLANCE



INDUSTRY



# ●● SPECIALLY DESIGNED FOR HARSH ENVIRONNEMENT WITH LOW LIGHT CONTRAST ●●

## PICO 640S

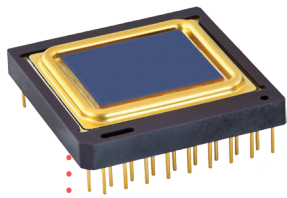


IMAGE QUALITY

RUGGEDIZED FOR HARSH ENVIRONMENT

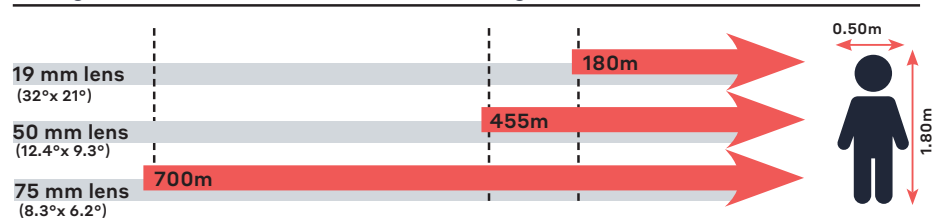
RELIABLE

SEAMLESS INTEGRATION

LOW POWER CONSUMPTION

ENHANCED IMAGE QUALITY	
Sharp contrast	<ul style="list-style-type: none"> <li>■ Thermal sensitivity &lt; 30 mK (f/ 1, 300K, 30Hz)</li> <li>■ Extended operating temperature [-40°C; +85°C]</li> </ul>
Fluid and smooth image	<ul style="list-style-type: none"> <li>■ Frame rate up to 120Hz</li> <li>■ Thermal time constant: 12 ms</li> </ul>
High uniformity	<ul style="list-style-type: none"> <li>■ Array operability &gt; 99.5 %</li> <li>■ Array operability ≥ 99.8 % (Pico640S+)</li> </ul>
PROVEN RELIABILITY	
	<ul style="list-style-type: none"> <li>■ Standards MIL810 – MIL883</li> <li>■ Thermal Weapon Sight (TWS) qualified</li> </ul>
Product availability and exportability	<ul style="list-style-type: none"> <li>■ Products designed and manufactured in Europe</li> <li>■ Guaranteed 10 years against vacuum loss</li> </ul>
SEAMLESS INTEGRATION	
Product platform	<ul style="list-style-type: none"> <li>■ Footprint compatible with Pico640Gen2</li> <li>■ Full access to sensor features (I<sup>2</sup>C)</li> <li>■ External frame synchronization capability</li> </ul>
Simplified image processing	<ul style="list-style-type: none"> <li>■ TECless, Shutterless compatible</li> <li>■ Single gain table and predictable offset management</li> </ul>
Battery optimization	<ul style="list-style-type: none"> <li>■ Low power consumption &lt; 130 mW</li> </ul>

### Recognition distances for human measuring 1.80 m x 0.50 m



Range for Johnson's criteria, target deltaT = 2K, perfect atmospheric and optics transmissions, theoretical square pixel.



**LYNRED HEADQUARTERS**  
 Avenue de la Vauve - CS 20018  
 91127 Palaiseau - France  
 Phone +33 (0)1 60 92 18 30  
 info@lynred.com

**DEVELOPMENT AND PRODUCTION CENTER**  
 Actipole - CS 10021 - 364, route de Valence  
 38113 Veurey-Voroize - France  
 Phone +33 (0)4 76 28 77 00  
 info@lynred.com

Ref: 06/2020/01-Device a lab pictures-Printed in France  
 Technical characteristics described in this data sheet are for information only. They are not contractual and may change without prior notice.