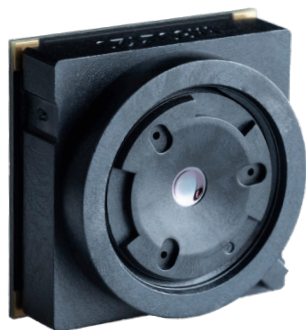


ThermEye™-b120

A disruptive thermal sensor technology for smart buildings.



ThermEye™-b120



Protects privacy



Day / Night



Multifunctional



Long battery life



Large area covered

- + Multifunctional sensor (detection, tracking, people counting)
- + Very Low Power and compact
- + Large area covered

Ideal for...

- > **Space management:** occupancy data tracking for optimal use of square meterage
- > **Energy management:** real-time data analysis for lower energy bills
- > **Safety:** hotspot detection for fire prevention
- > **Security:** intrusion detection

Plus points

- > Non intrusive and anonymous
- > Ideal for wireless/IoT solutions

ThermEye™-b120



ThermEye
Building

ThermEye™ -b120



Performance

80 x 80 pixel thermal sensors (LWIR microbolometer technology)

Operating temperature: -10°C to +50°C

Wide field of view: HOV 120°



Flexibility

Continuous mode from 1 Hz to 100 Hz

Intermittent mode for very low power applications (e.g. 1 frame/min)

Surface Mount Device BGA^(*), compliant with reflow process (IPC/JEDEC J-STD-020E)

HSync/VSync clocking

Full digital (integrated ADC and DAC)

(*)Ball Grid Array

Long battery life

Power consumption ≤ 55 mW (continuous mode)

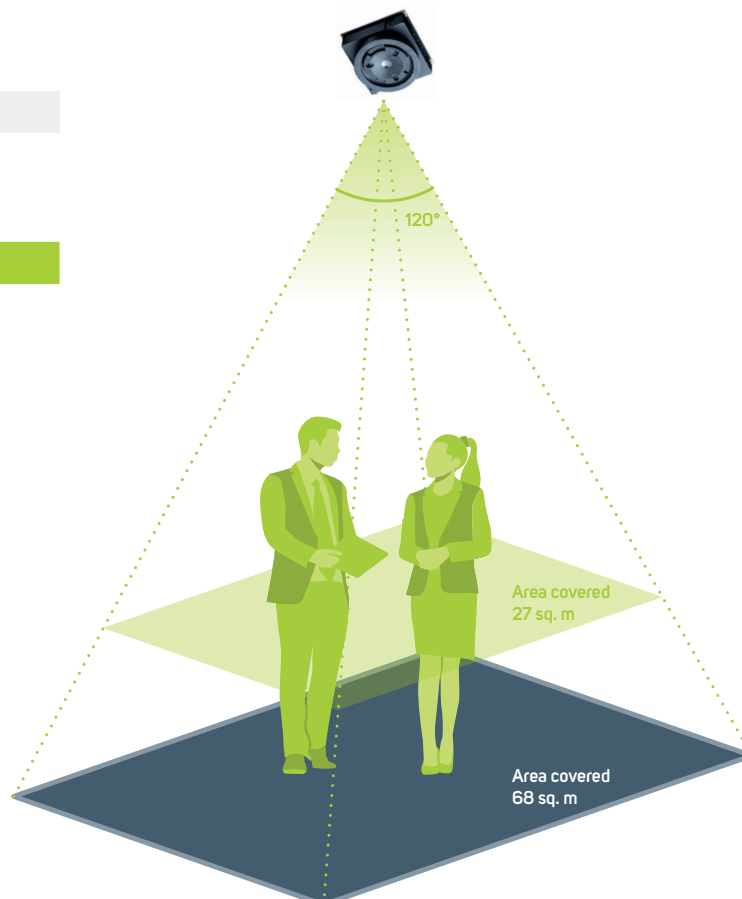
In intermittent mode @ 1 frame/2min 1 battery AA lasts for 5 years

Compact form factor

Dimensions (mm): 14 x 14 x 9

Weight < 2g

	Product number	HFOV
ThermEye™ -b120	M80L120V2	120°



LYNRED HEADQUARTER

Avenue de la Vauve - CS 20018
91127 Palaiseau - France
Phone + 33 1 60 92 18 30
info@lynred.com

DEVELOPMENT AND PRODUCTION CENTER

Z.I. - BP 21
38113 Veurey-Voroize - France
Phone + 33 4 76 28 77 00
info@lynred.com

 www.lynred.com

ThermEye™ -b120