

INFRARED DETECTOR

PICO640 Gen2

640 x 480 – 17 μm

The thermal image sensor Pico640Gen2 is a versatile product.

Built on proven technology, it limits development costs and shortens time to market.

DESIGNED TO ANSWER ALL YOUR NEEDS



ENHANCED IMAGE QUALITY



PROVEN RELIABILITY



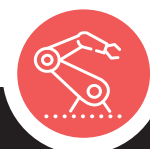
SEAMLESS INTEGRATION

DEFENSE

LEISURE

SURVEILLANCE

INDUSTRY



ORDERING REFERENCE: PICO640-046 / PICO640-046+

DESIGNED TO ANSWER ALL YOUR NEEDS

PICO 640Gen2

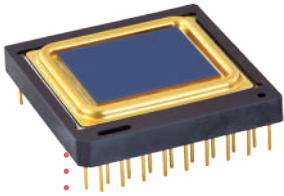


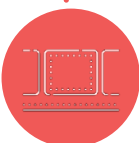
IMAGE QUALITY



RUGGEDIZED FOR HARSH ENVIRONMENT



RELIABLE



SEAMLESS INTEGRATION



LOW POWER CONSUMPTION

ENHANCED IMAGE QUALITY

Sharp contrast	<ul style="list-style-type: none"> ■ Thermal sensitivity < 50 mK (f/ 1, 300K, 30Hz) ■ Thermal sensitivity < 40 mK (f/ 1, 300K, 30Hz) (Pico640+) ■ Extended operating temperature [-40°C; +85°C]
Fluid and smooth image	<ul style="list-style-type: none"> ■ Frame rate up to 120Hz ■ Thermal time constant < 12 ms
High uniformity	<ul style="list-style-type: none"> ■ Array operability > 99.5 % ■ Array operability ≥ 99.8 % (Pico640+)

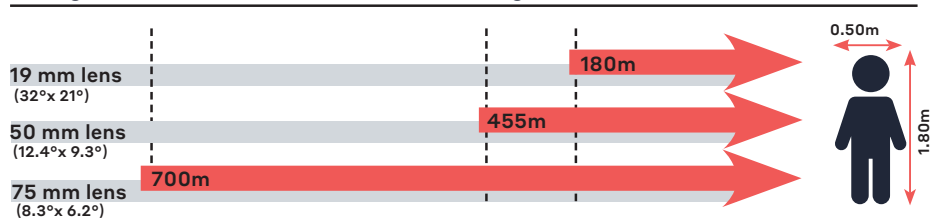
PROVEN RELIABILITY

	<ul style="list-style-type: none"> ■ Standards MIL810 – MIL883
	<ul style="list-style-type: none"> ■ Thermal Weapon Sight (TWS) qualified
Product availability and exportability	<ul style="list-style-type: none"> ■ Products designed and manufactured in Europe
Product delivery to our customers	<ul style="list-style-type: none"> ■ On-time order deliveries > 95% ■ Guaranteed 10 years against vacuum loss

SEAMLESS INTEGRATION

Product platform	<ul style="list-style-type: none"> ■ Full access to sensor features (I²C) ■ External frame synchronization capability
Simplified image processing	<ul style="list-style-type: none"> ■ TECless, Shutterless compatible ■ Single gain table and predictable offset management
Battery optimization	<ul style="list-style-type: none"> ■ Low power consumption < 130 mW

Recognition distances for human measuring 1.80 m x 0.50 m



Range for Johnson's criteria, target deltaT = 2K, perfect atmospheric and optics transmissions, theoretical square pixel.



LYNRED HEADQUARTERS
 Avenue de la Vauve - CS 20018
 91127 Palaiseau - France
 Phone +33 (0)1 60 92 18 30
 info@lynred.com

DEVELOPMENT AND PRODUCTION CENTER
 Actipole - CS 10021 - 364, route de Valence
 38113 Veurey-Voroize - France
 Phone +33 (0)4 76 28 77 00
 info@lynred.com

Réf. 06/2020/01-Device a lab pictures-Printed in France
 Technical characteristics described in this data sheet are for information only. They are not contractual and may change without prior notice.