



LYNRED®

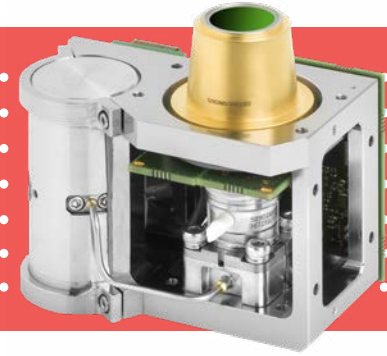
See Beyond Horizons



INFRARED DETECTORS

SEEGNUS MW SL™

1280x1024 - 7.5μm



THE NEW SEEGNUS MW SL™ product is particularly suitable for integration into high performance systems requiring compactness & high MTTF.

THE **FIRST** 7.5μm PITCH SXGA DETECTOR WITHIN THE **PLUGUP** PLATFORM



HIGH IMAGE QUALITY



HIGH RESOLUTION



COMPACTNESS



EASY MECHANICAL INTEGRATION

DEFENSE

MOBILE
SURVEILLANCE

HTTI

GROUND
VEHICLE



ORDERING REFERENCE: SEEGNUS MW SL™

TECHNICAL DATA NOT CLASSIFIED UNDER EXPORT CONTROL REGULATION



MULTI-PURPOSE



LOW POWER



COMPACT



WEIGHT



LOW ACOUSTIC NOISE



LYNRED HEADQUARTERS DEVELOPMENT & PRODUCTION CENTER

Actipole - CS 10021 - 364, route de Valence
38113 Veurey-Voroize - France
Phone +33 (0)4 76 28 77 00
info@lynred.com

LYNRED ASIA PACIFIC PTE LTD

5 Shenton Way,
#22-04 UIC Building
068808 Singapore
info@lynred.com

LYNRED USA

373 US Highway 46W
Fairfield, NJ 07004, USA
Phone +1 973.882.0211
info@lynred-usa.com

NIT (New Imaging Technologies) Premium SWIR by LYNRED

1 impasse de la Noisette
91370 Verrières-le-Buisson - France
Phone +33 1 64 47 88 58
info@new-imaging-technologies.com

THE FIRST 7.5μM PITCH SXGA DETECTOR WITHIN THE PLUGUP PLATFORM

PRODUCT EMBEDDED FEATURES

IDDCA + PROXIMITY BOARD + CRYOCOOLER CONTROLLER

ARRAY FEATURES

Detector spectral response ■ 3.6 to 4.2μm

FPA operating temperature ■ Up to 150 K

ROIC (READ-OUT INTEGRATED CIRCUIT)

Selection ■ IWR and ITR

ROIC architecture ■ Direct Injection

ROIC functionalities ■ Invert/Revert

Windowing mode ■ Down to 640 x 4

Frame rate ■ Up to 60Hz

TYPICAL PERFORMANCES

NETD ■ 42 mK (300K, 50% WF, f/3)

Array operability ■ > 99.5%

RFPN at 50% well fill ■ < 0.5 × RMS noise

INTERFACES

Video output ■ CameraLink® Base Mode

Communication ■ CameraLink® UART

Product Power Supply ■ 12 Vdc typical

PHYSICAL CHARACTERISTICS

Maximum Outline dimensions (LxWxH) ■ 56 mm x 77 mm x 72.5 mm

Weight ■ 360 g

K588

Aperture ■ f/4, f/3.4, f/3, f/2

Regulated Input power @20°C ■ <3.7Wdc

Cooldown Input power @20°C ■ <13.5Wdc

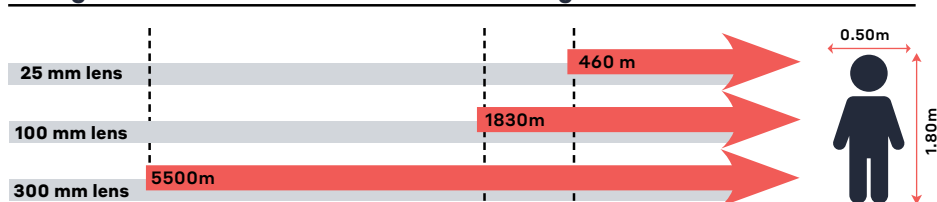
Cooldown time @20°C ■ <4min40s

Cooler MTTF ■ 32,000hrs

AVAILABLE SERVICES

Technical training and support

Recognition distances for human measuring 1.80 m x 0.50 m



Range for Johnson's criteria, target deltaT = 2 K, perfect atmospheric and optics transmissions, theoretical square pixel.