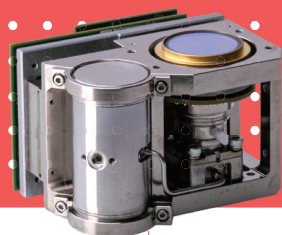
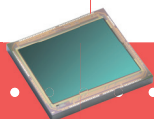




LYNRED®

See Beyond Horizons

SIROCCO SW-FPA™



SIROCCO SW-K588™



INFRARED DETECTORS

SIROCCO SW™

640 x 512 - 15μm - eSWIR

The infrared detector designed for spectrometry. LYNRED MCT technology provides leading edge performance in terms of sensibility, noise, dark current and operability.

THE SOLUTION FOR **SWIR** SPECTROMETRY AND IMAGING UP TO 2.5μm



HIGH SENSITIVITY IN THE WHOLE SPECTRAL RESPONSE



INHERITED FROM SPACE TECHNOLOGIES



AVAILABLE IN 2 DIFFERENT VERSIONS: FPA & IDDCA

SPECTROMETRY

MACHINE VISION

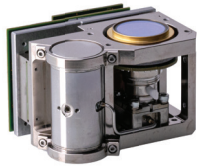
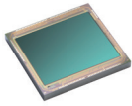
FIXED SURVEILLANCE

MOBILE SURVEILLANCE



ORDERING REFERENCE: SIROCCO SW- FPA™ / SIROCCO SW-K588™

TECHNICAL DATA NOT CLASSIFIED UNDER EXPORT CONTROL REGULATION



MULTI-PURPOSE



VERSATILE

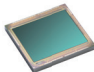
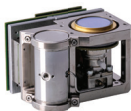


LOW NOISE



HIGH PERFORMANCE

●● THE SOLUTION FOR SWIR SPECTROMETRY AND IMAGING UP TO 2.5μm ●●

ARRAY FEATURES		
Format	■ 640 x 512 pixels	
Pixel pitch	■ 15μm	
Sensor type	■ MCT	
Spectral response	■ 0.8 - 2.5μm	
ROIC (READ-OUT INTEGRATED CIRCUIT) FEATURES		
Integration type	■ Snapshot / Global shutter	
Charge handling capacity	■ 1.0 Me-	
Input stage	■ CTIA	
Readout modes	■ ITR / IWR	
Integration time	■ Externally controlled	
Maximum full frame rate	■ 200 frame/s	
Specific operating mode	■ Embedded support for windowing. Minimum window size is 160 x 2	
TYPICAL PERFORMANCES		
Quantum Efficiency (QE)	■ 80% from 0.8μm to 2.5μm	
ROIC Noise	■ 150 e-	
Dark current	■ 150 fA @ 190K	
Array operability	■ > 99.5%	
PACKAGING	SIROCCO SW FPA™	SIROCCO SW K588™
		
Dimensions	■ 11.2 x 11.9 x 1.07 mm	■ 55 x 79 x 66 mm
FPA operating temperature	■ 150 - 200 K	■ N/A
Video output	■ 4 analog outputs	■ CameraLink
Cooler	■ N/A	■ Split Linear cryocooler: Ricor K588
Cool down time	■ N/A	■ < 200s @ 22°C
Power supply voltage range	■ N/A	■ 12 Vdc
Product Power Consumption	■ N/A	■ Cooldown : < 11 Wdc @ 22°C ■ Steady state : < 5.0 Wdc @ 22°C

LYNRED HEADQUARTERS DEVELOPMENT & PRODUCTION CENTER

Actipole - CS 10021 - 364, route de Valence
38113 Veurey-Voroize - France
Phone +33 (0)4 76 28 77 00
info@lynred.com

LYNRED ASIA PACIFIC PTE LTD

5 Shenton Way,
#22-04 UIC Building
068808 Singapore
info@lynred.com

LYNRED USA

373 US Highway 46W
Fairfield, NJ 07004, USA
Phone +1 973.882.0211
info@lynred-usa.com

NIT (New Imaging Technologies) Premium SWIR by LYNRED

1 impasse de la Noisette
91370 Verrières-le-Buisson - France
Phone +33 1 64 47 88 58
info@new-imaging-technologies.com