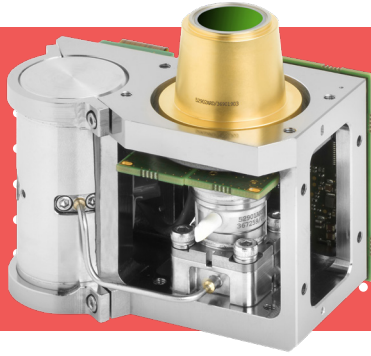




**LYNRED®**

See Beyond Horizons



# ARGO MW SL™

640 x 512 - 15µm

INFRARED DETECTORS

THE NEW ARGO MW SL™ product is particularly suitable for integration into small UAV gimbals featuring high sensitivity and compactness.

## THE NEW VGA SOLUTION FOR PHOTON LIMITED CONDITIONS

-  HIGH IMAGE QUALITY
-  INTEGRATED WITHIN PLUGUP
-  COMPACTNESS
-  EASY MECHANICAL INTEGRATION

DEFENSE

FIXED SURVEILLANCE



ORDERING REFERENCE: ARGO MW SL™

TECHNICAL DATA NOT CLASSIFIED UNDER EXPORT CONTROL REGULATION

# ●● THE NEW VGA SOLUTION FOR PHOTON LIMITED CONDITIONS ●●



## MULTI-PURPOSE



## HIGH SENSITIVITY



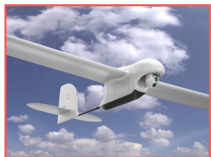
## COMPACT



## WEIGHT



## LOW ACOUSTIC NOISE



### PRODUCT EMBEDDED FEATURES

IDDCA + PROXIMITY BOARD + CRYOCOOLER CONTROLLER

### ARRAY FEATURES

Detector spectral response ■ 3.7 to 4.8 $\mu$ m

FPA operating temperature ■ Up to 130 K

### ROIC (READ-OUT INTEGRATED CIRCUIT)

Selection ■ IWR and ITR

ROIC architecture ■ Direct Injection

ROIC functionalities ■ Invert/Revert

Windowing modes ■ Down to 160 x 2

Charge handling capacity ■ 2.1 Me-

Signal output rate ■ 10 MHz

Frame rate ■ 60 Hz

### TYPICAL\* PERFORMANCES

NETD ■ < 33 mK (27°C, 50%WF, f/4)

Array operability ■ > 99.5%

RFPN at 50% well fill ■ < 0.5 x RMS noise

### INTERFACES

Video output ■ CameraLink® Base Mode

Communication ■ CameraLink® UART

Product Power Supply ■ 12 Vdc typical

### PHYSICAL CHARACTERISTICS

Maximum Outline dimensions (LxWxH) ■ 56 mm x 77 mm x 72.5 mm

Weight ■ 360 g

Aperture ■ f/4; f/5.5

### COOLER CHARACTERISTICS: K588

Regulated Input power @20°C ■ 4Wdc

Cooldown Input power @20°C ■ 12Wdc

Cooldown time @20°C ■ 5min

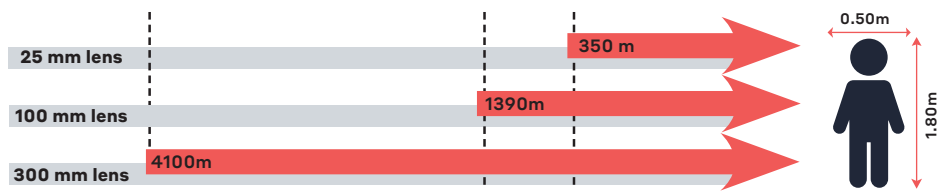
IDDCA MTTF ■ 27.000hrs

### AVAILABLE SERVICES

Technical training and support

Also available in ATI ARGO SL™ with embedded image correction

### Recognition distances for human measuring 1.80 m x 0.50 m



Range for Johnson's criteria, target  $\Delta T = 2$  K, perfect atmospheric and optics transmissions, theoretical square pixel.

#### LYNRED HEADQUARTERS DEVELOPMENT & PRODUCTION CENTER

Actipole - CS 10021 - 364, route de Valence  
38113 Veurey-Voroize - France  
Phone +33 (0)4 76 28 77 00  
info@lynred.com

#### LYNRED USA

373 US Highway 46W  
Fairfield, NJ 07004, USA  
Phone +1 973.882.0211  
info@lynred-usa.com

#### NIT (New Imaging Technologies) Premium SWIR by LYNRED

1 impasse de la Noisette  
91370 Verrières-le-Buisson - France  
Phone +33 1 64 47 88 58  
info@new-imaging-technologies.com