



LYNRED®

See Beyond Horizons

ATI GALATEA MW SL™

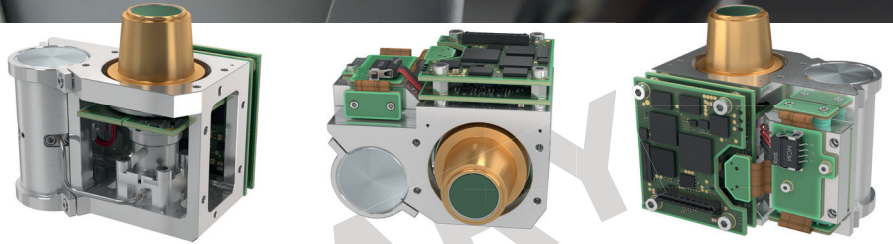
640 x 512 - 15µm

ADVANCED THERMAL IMAGER

OPENING THE PLUGUP FAMILY TO STATE-OF-THE-ART IMAGE CORRECTION

The **ATI GALATEA SL™ Advanced Thermal Imager** is a SWaP module that streamlines camera development for diverse applications such as UxS (Unmanned systems) and surveillance.

The **ATI GALATEA SL™** incorporates a proven, high performance LYNRED thermal sensor combined with advanced image algorithms, ensuring the delivery of high-quality thermal images.



HIGH END ALGORITHMS



EMBEDDED WITHIN PLUGUP™



UNIQUE ELECTRICAL INTERFACE FOR C&CE



DEFENSE



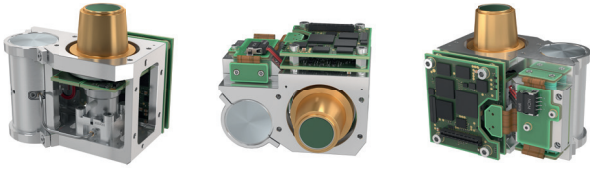
FIXED SURVEILLANCE



ORDERING REFERENCES: ATI GALATEA MW SL™

TECHNICAL DATA NOT CLASSIFIED UNDER EXPORT CONTROL REGULATION

OPENING THE PLUGUP FAMILY TO STATE-OF-THE-ART IMAGE CORRECTION



HIGH PERFORMANCE ALGORITHMS



LOW POWER CONSUMPTION



COMPACT

PRODUCT EMBEDDED FEATURES

IDDCA + PROXIMITY BOARD + CRYOCOOLER CONTROLLER + ATI BOARD

ARRAY FEATURES

Detector spectral response	■ 3.6 to 4.2 μ m
FPA operating temperature	■ Up to 150 K

ROIC (READ-OUT INTEGRATED CIRCUIT)

Selection	■ IWR and ITR
Windowing modes	■ TBD
Charge handling capacity	■ 2.1 Me-
Signal output rate	■ 10 MHz
Frame rate	■ up to 60 Hz

PERFORMANCES

NETD Sensor	■ < 28 mK (27°C, 50%WF, f/4)
NETD Post Process	■ <20 mK
Array operability	■ > 99.5%
RFPN at 50% well fill	■ < 0.5 \times RMS noise
Aperture	■ f/4; f/5.5
Lag Time	■ 1 Frame

INTERFACES

Video output	■ CameraLink®, USB3
Product Power Supply	■ 12 Vdc typical
Connector	■ SAMTEC LSHM-130

PHYSICAL CHARACTERISTICS

Maximum Outline dimensions (LxWxH)	■ 58.5 mm x 77 mm x 72.5 mm
Weight	■ 375 g

K588

Regulated Input power @20°C	■ 4Wdc
Cooldown Input power @20°C	■ 12Wdc
Cooldown time @20°C	■ 3min 30s
Cooler MTTF	■ 32,000hrs

EMBEDDED ALGORITHMS ONTO FINAL PRODUCT

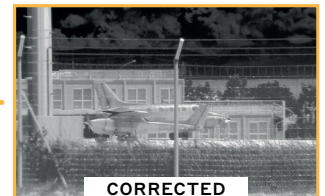
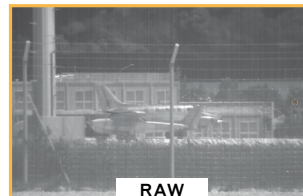
ALGORITHMS

- 2 point Non-Uniformity Correction (up to 4 tables)
- Bad Pixel Replacement
- Denoising (Spatial & Temporal)
- Evolutive Bad Pixel Detection
- Image Flip (H/V)
- Video Test Pattern
- Destripping
- Tone Mapping
- Digital Detail Enhancement
- Graphic Overlay

AVAILABLE SERVICES

Technical training and support

LYNRED Toolbox™ (LTB)



LYNRED HEADQUARTERS DEVELOPMENT & PRODUCTION CENTER

Actipole - CS 10021 - 364, route de Valence
38113 Veurey-Voroize - France
Phone +33 (0)4 76 28 77 00
info@lynred.com

LYNRED USA

373 US Highway 46W
Fairfield, NJ 07004, USA
Phone +1 973.882.0211
info@lynred-usa.com

NIT (New Imaging Technologies) Premium SWIR by LYNRED

1 impasse de la Noisette
91370 Verrières-le-Buisson - France
Phone +33 1 64 47 88 58
info@new-imaging-technologies.com