



LYNRED®

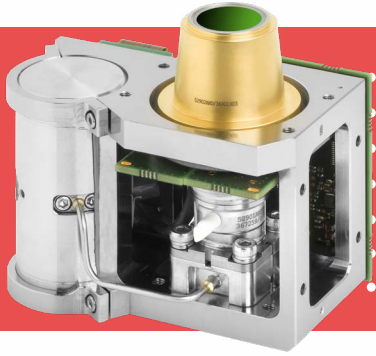
See Beyond Horizons



INFRARED DETECTORS





DRACO MW SL™

1280x1024 - 7.5µm



THE NEW DRACO MW SL™ product is particularly suitable for integration into ground vehicles and C-UAVs systems requiring high sensitivity & robustness.

THE NEW SXGA SOLUTION FOR PHOTON LIMITED CONDITIONS WITHIN THE PLUGUP™ PLATFORM

-  HIGH SENSITIVITY
-  HIGH RESOLUTION
-  COMPACTNESS
-  EASY MECHANICAL INTEGRATION

DEFENSE

GROUND VEHICLE

C-UAVS

SURVEILLANCE



ORDERING REFERENCE: DRACO MW SL™



●● THE NEW SXGA SOLUTION FOR PHOTON LIMITED CONDITIONS WITHIN THE PLUGUP™ PLATFORM ●●

MULTI-PURPOSE



HIGH SENSITIVITY



COMPACT



ROBUSTNESS



HIGH MTTF

PRODUCT EMBEDDED FEATURES

IDDCA + PROXIMITY BOARD + CRYOCOOLER CONTROLER

ARRAY FEATURES

Detector spectral response	■ 3.7 to 4.8µm
Resolution, pixel pitch, Technology	■ 1280x1024 - 7.5µm - T2SL
FPA operating temperature	■ 130 K

ROIC (READ-OUT INTEGRATED CIRCUIT)

Selection	■ IWR and ITR
ROIC architecture	■ Direct Injection
ROIC functionalities	■ Invert/Revert
Windowing mode	■ Down to 640 x 4
Charge handling capacity	■ 2.3 Me-
Frame rate	■ Up to 75Hz

TYPICAL PERFORMANCES

NETD	■ 35 mK (300K, 50%WF, f/3)
Array operability	■ > 99.5%
RFPN at 50% well fill	■ < 0.5 × RMS noise

INTERFACES

Video output	■ CameraLink® Base Mode
Communication	■ CameraLink® UART
Product Power Supply	■ 12 Vdc typical

PHYSICAL CHARACTERISTICS

Maximum Outline dimensions (LxWxH)	■ 56 mm x 77 mm x 72.5 mm
Weight	■ 360 g

K588

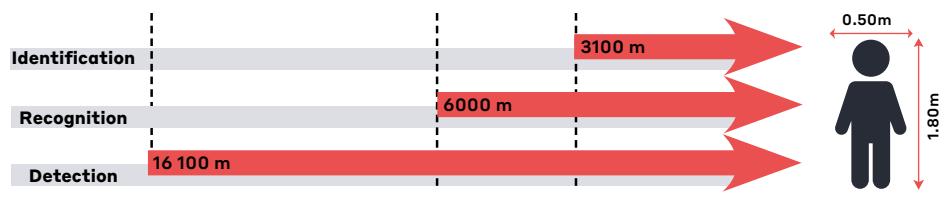
Aperture	■ f/4, f/3.4, f/3, f/2
Regulated Input power @20°C	■ <4.7Wdc
Cooldown Input power @20°C	■ <14Wdc
Cooldown time @20°C	■ <5min
Cooler MTTF	■ 32,000hrs

AVAILABLE SERVICES

Technical training and support



DRI at 300mm for human measuring 1.80 m x 0.50 m



Range for Johnson's criteria, target deltaT = 2 K, MidLat Summer, perfect optics transmissions, theoretical square pixel

LYNRED HEADQUARTERS DEVELOPMENT & PRODUCTION CENTER

Actipole - CS 10021 - 364, route de Valence
38113 Veurey-Voroize - France
Phone +33 (0)4 76 28 77 00
info@lynred.com

LYNRED USA

373 US Highway 46W
Fairfield, NJ 07004, USA
Phone +1 973.882.0211
info@lynred-usa.com

NIT (New Imaging Technologies) Premium SWIR by LYNRED

1 impasse de la Noisette
91370 Verrières-le-Buisson - France
Phone +33 1 64 47 88 58
info@new-imaging-technologies.com