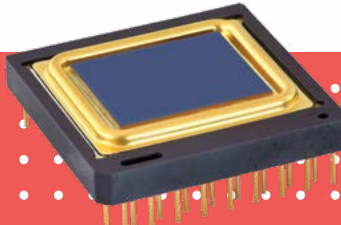




**LYNRED®**

See Beyond Horizons






INFRARED DETECTOR

# PICO640-046/046+™

640 x 480 – 17µm

The thermal image sensor PICO640-046™ / PICO640-046+™ is a versatile product. Built on proven technology, it limits development costs and shorten time to market.

## DESIGNED TO ANSWER ALL YOUR NEEDS

-  **ENHANCED IMAGE QUALITY**
-  **PROVEN RELIABILITY**
-  **SEAMLESS INTEGRATION**

DEFENSE

HUNTING & LEISURE

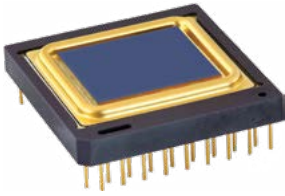
SURVEILLANCE

THERMOGRAPHY



ORDERING REFERENCE: PICO640-046™ / PICO640-046+™

# DESIGNED TO ANSWER ALL YOUR NEEDS



## MULTI-PURPOSE



## IMAGE QUALITY



## RUGGEDIZED FOR HARSH ENVIRONMENT



## RELIABLE



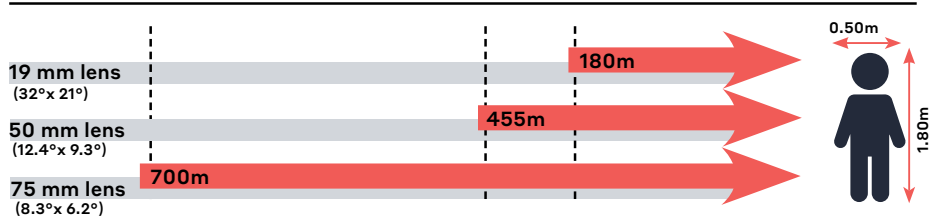
## SEAMLESS INTEGRATION



## LOW POWER CONSUMPTION

	PICO640-046™	PICO640-046+™
<b>ENHANCED IMAGE QUALITY</b>		
Sharp contrast	<ul style="list-style-type: none"> <li>Thermal sensitivity &lt;50mK (f/1, 300K, 30Hz)</li> </ul>	<ul style="list-style-type: none"> <li>Thermal sensitivity &lt; 40 mK (f/1, 300K, 30Hz)</li> <li>Extended operating temperature [-40°C; +85°C]</li> </ul>
Fluid and smooth image	<ul style="list-style-type: none"> <li>Frame rate up to 120Hz (2 outputs)</li> <li>Thermal time constant &lt; 12 ms</li> </ul>	
High uniformity	<ul style="list-style-type: none"> <li>Array operability &gt; 99.5 %</li> </ul>	
<b>PROVEN RELIABILITY</b>		
Certifications	<ul style="list-style-type: none"> <li>Standards MIL810 – MIL883 A</li> <li>Thermal Weapon Sight (TWS) qualified</li> </ul>	
Product availability and exportability	<ul style="list-style-type: none"> <li>Products designed and manufactured in Europe</li> </ul>	
Product delivery to our customers	<ul style="list-style-type: none"> <li>On-time order deliveries &gt; 95%</li> </ul>	
Guarantee	<ul style="list-style-type: none"> <li>Guaranteed 10 years against vacuum loss</li> </ul>	
<b>SEAMLESS INTEGRATION</b>		
Product platform	<ul style="list-style-type: none"> <li>Full access to sensor features (I<sup>2</sup>C)</li> <li>External frame synchronization capability</li> </ul>	
Simplified image processing	<ul style="list-style-type: none"> <li>TECless, Shutterless compatible</li> <li>Single gain table and predictable offset management</li> </ul>	
Battery optimization	<ul style="list-style-type: none"> <li>Low power consumption &lt; 130 mW (1 output)</li> <li>Low power consumption &lt; 160 mW (2 outputs)</li> </ul>	

## Recognition distances for human measuring 1.80 m x 0.50 m



Range for Johnson's criteria, target delta T = 2K, perfect atmospheric and optics transmissions, theoretical square pixel.



### LYNRED HEADQUARTERS DEVELOPMENT & PRODUCTION CENTER

Actipole - CS 10021 - 364, route de Valence  
38113 Veurey-Voroize - France  
Phone +33 (0)4 76 28 77 00  
info@lynred.com

### LYNRED USA

373 US Highway 46W  
Fairfield, NJ 07004, USA  
Phone +1 973.882.0211  
info@lynred-usa.com

### NIT (New Imaging Technologies) Premium SWIR by LYNRED

1 impasse de la Noisette  
91370 Verrières-le-Buisson - France  
Phone +33 1 64 47 88 58  
info@new-imaging-technologies.com