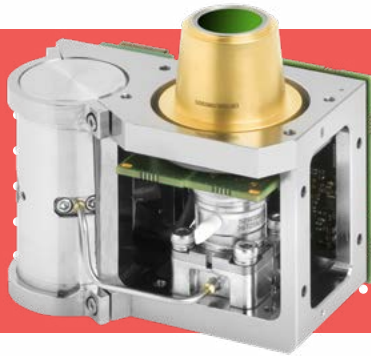




LYNRED®

See Beyond Horizons



ARGO MW SL™

640 x 512 - 15µm

INFRARED DETECTORS

THE NEW ARGO MW SL™ product is particularly suitable for integration into small UAV gimbals featuring high sensitivity and compactness.

THE NEW VGA SOLUTION FOR PHOTON LIMITED CONDITIONS

-  HIGH IMAGE QUALITY
-  INTEGRATED WITHIN PLUGUP
-  COMPACTNESS
-  EASY MECHANICAL INTEGRATION

DEFENSE

FIXED SURVEILLANCE



ORDERING REFERENCE: ARGO MW SL™

●● THE NEW VGA SOLUTION FOR PHOTON LIMITED CONDITIONS ●●



MULTI-PURPOSE



HIGH SENSITIVITY



COMPACT



WEIGHT



LOW ACOUSTIC NOISE



PRODUCT EMBEDDED FEATURES

IDDCA + PROXIMITY BOARD + CRYOCOOLER CONTROLER

ARRAY FEATURES

Detector spectral response	■ 3.7 to 4.8 μ m
Resolution, pixel pitch, Technology	■ 640 x 512, 15 μ m, T2SL
FPA operating temperature	■ Up to 130 K

ROIC (READ-OUT INTEGRATED CIRCUIT)

Selection	■ IWR and ITR
ROIC architecture	■ Direct Injection
ROIC functionalities	■ Invert/Revert
Windowing modes	■ Down to 160 x 2
Charge handling capacity	■ 2.1 Me-
Signal output rate	■ 10 MHz
Frame rate	■ 60 Hz

TYPICAL* PERFORMANCES

NETD	■ < 33 mK (27°C, 50%WF, f/4)
Array operability	■ > 99.5%
RFPN at 50% well fill	■ < 0.5 x RMS noise

INTERFACES

Video output	■ CameraLink® Base Mode
Communication	■ CameraLink® UART
Product Power Supply	■ 12 Vdc typical

PHYSICAL CHARACTERISTICS

Maximum Outline dimensions (LxWxH)	■ 56 mm x 77 mm x 72.5 mm
Weight	■ 360 g
Aperture	■ f/4; f/5.5

COOLER CHARACTERISTICS: K588

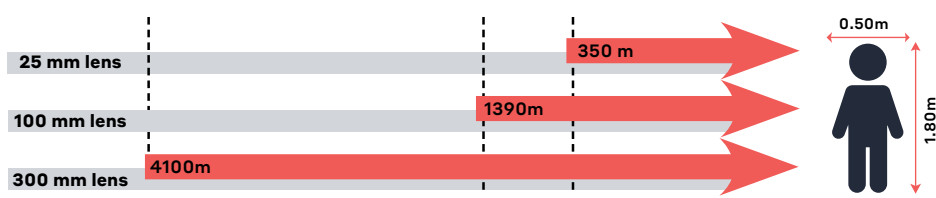
Regulated Input power @20°C	■ 3.8Wdc
Cooldown Input power @20°C	■ 12Wdc
Cooldown time @20°C	■ 5min
IDDCA MTTF	■ 27.000hrs

AVAILABLE SERVICES

Technical training and support

Also available in ATI ARGO SL™ with embedded image correction

Recognition distances for human measuring 1.80 m x 0.50 m



Range for Johnson's criteria, target $\Delta T = 2$ K, perfect atmospheric and optics transmissions, theoretical square pixel.

LYNRED HEADQUARTERS DEVELOPMENT & PRODUCTION CENTER

Actipole - CS 10021 - 364, route de Valence
38113 Veurey-Voroize - France
Phone +33 (0)4 76 28 77 00
info@lynred.com

LYNRED USA

373 US Highway 46W
Fairfield, NJ 07004, USA
Phone +1 973.882.0211
info@lynred-usa.com

NIT (New Imaging Technologies) Premium SWIR by LYNRED

1 impasse de la Noisette
91370 Verrières-le-Buisson - France
Phone +33 1 64 47 88 58
info@new-imaging-technologies.com